

COSTUME REFERENCE LIBRARY

Clone Commander Bacara



Model **CC4841**, Photo by **Sharon Langthorne**



Description: Clone Commander Bacara

Prefix: CC

Detachment: Clone Trooper Detachment

Context: Episode III: Revenge of the Sith

Bacara is a clone marshal commander serving in the Grand Army of the Republic. He was selected to be part of the initial ARC training program under the command of Alpha-17. During this time he developed a reputation as a loner. His loner's reputation carried over into his career as a soldier, but does not stop him from putting the needs of his troops ahead of his own. Upon completion of his ARC training, Bacara used his newly acquired knowledge to turn the Galactic Marines into a highly efficient ground unit. Following continued action in the Outer Rim Sieges, Bacara and Ki-Adi-Mundi were ordered to the snow-covered world Mygeeto. While stationed on Mygeeto, Bacara was given Order 66 and eliminated Jedi general Ki-Adi-Mundi.

The 501st approval requirements are listed in black.

In the page below, items listed in blue are recommended features that will improve the quality of the costume. Items listed in red are intended to further enhance the finished costume.

For 501st membership only the requirements in black need to be met.

IMPORTANT: The "Animated" armor design, seen in The Clone Wars CG Series, differs from the "Realistic" armor design used to create characters from the theatrical films and graphic novels. See [this thread at clonetroopers.net](#) for the differences between the sculpts.

This Visual Guide has been reviewed by the detachment staff and the LMO team and is certified for use as a minimum approval guideline for GMLs. GMLs are free to approve this costume type.

- Any uncertainties or questionable aspects of the submitted costume should be brought to the appropriate DL/GML peer review section of the legion forum.

Required Costume Components

The following costume components are present and appear as described below.



Helmet

For 501st approval:

- Episode 3 style Clone Helmet.
- Helmet dome has no mohawk.
- Black eye lens.
- Cheeks are filled in and replaced with "mud flaps" wrapping the face. This will be grey in color. There are three vents on the cheeks near the eyes on each side of the face.
- Helmet frown is charcoal gray in color. Wire or plastic mesh is utilized inside the helmet to cover the open pieces of the frown. Only two nose vents are present.
- Primer gray stripe around back of dome. There is also a thin black line that follows the bottom of the gray stripe that wraps around the dome.
- Helmet has draping dome that covers the back of the head. On each side, where the ears would be, two protruding platforms are present. On the left side of the helmet, there is a gray antenna with a black base.
- On the face of the dome over the right eye there are 2 .25 inch red dots horizontal to the ground.
- There is another set of red dots located behind the left antenna platform.

For level two certification (if applicable):

- **Helmet has the appearance of a neck ring.**

For level three certification (if applicable):

- **Helmet has an enclosed complete neck ring that seals the helmet to the neck.**

Neck Seal

For 501st approval:

- Neck seal is black in color with vertical ribbing or being smooth in appearance.
- No logos or labels are visible.

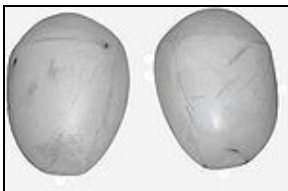


- ◆ If the seal is not incorporated as part of the undersuit, a balaclava or other similar covering is acceptable.



Under Suit
For 501st approval:

- Black non-textured material, either one-piece or two-piece construction with no visible zippers or logos.



Shoulder Armor
For 501st approval:

- Armor is painted matte or satin white.
- Shoulders are tear drop in shape with all rounded edges.

For level two certification (if applicable):

- Shoulder bells are not symmetrical.
 - ◆ The Shoulder bells slightly curve back at the bottom of the shoulder.



Upper Arm Armor
For 501st approval:

- Armor is painted matte or satin white.
- There is a dimple on the lower area of the back of the arm. The outside of the bicep has a hard line edge at the front that turns in. The inside of the upper arm is rounded.
- Armor is seamless.
 - ◆ No visible traces of how the armor was assembled are shown

Elbow Armor
For 501st approval:



- Armor is painted matte or satin white
- There are two elbows. On each elbow on the outside of the body near the connection point of the elbow strap there are detail slots that look like an equal symbol on both elbow pieces.
- Both elbows have strapping.
 - ◆ The straps have a raised detail line at the top and bottom of the strap.

For level two certification (if applicable):

- Elbows are mirror images of each other with a notched area on the outside of the elbow above the detail marks.



Forearm Armor

For 501st approval:

- Armor is painted matte or satin white.
- Both left and right forearms are mirror images of each other.
- Right forearm has a compad with 8 small buttons, 1 Large main button, and 1 slightly smaller rectangular button.
- Forearm tops have a flattened triangular area that have a ridge that comes to a point at the top of the forearm.
- Armor is seamless.
 - ◆ No visible traces of how the armor was assembled are shown.

For level two certification (if applicable):

- Compad has detail antenna on its left.
- Instead of a hard edge the top of the forearm has a bone ridge.



Hand Plates

For 501st approval:

- Realistic style hand plates.
- Armor is painted matte or satin white.
- Hand plates have a top curving ridge that come to a point over the index or middle finger just past the main knuckle of the hand.
- Armor is weathered with shades of grey.



Gloves

For 501st approval:

- Black over the wrist gloves made of leather, nylon, or other low pile fabrics.
- Gloves cover any exposed skin.
- Gloves do not show any labels or logos when the armor is worn.

Chest Armor

For 501st approval:



- Armor is painted matte or satin white.
- Two detail slots on right breast.
- Chest and back plate match together at the sides with no open gap, just a seam line.
- Shoulder straps are placed underneath the chest to connect to the back.

For level two certification (if applicable):

- Shoulder straps are slotted into the chest into the detail ridges of the top connection points.



Command Harness

For 501st approval:

- Realistic Style Command Harness.
- Maroon shoulder spaulder attached over right shoulder armor and aligned with top edge of bell.
 - ◆ Wider end faces away from shoulder strap.
- Shoulder strap harness connector attaches over the right shoulder strap.
 - ◆ Harness connection has a silver strap connector on front and back, with center band colored Brown.
- Front black belt strap is 2 inches wide and extends from the top of the two front belt boxes and feeds through front harness connector.
- The right belt box strap runs up and into the harness connector from behind, then feeds outward over front and crosses the chest down to left belt box. Front belt boxes each have a small, 1/2 inch high, grey connector frame detail on top that strap feeds into.
- A silver buckle is secured at the center of the cross over strap.
- Overlaid on top of front straps over right chest is a grey angular plate with a diagonal maroon colored stripe across it. Plate is located between shoulder connector and metal buckle.
- Back ? black belt strap is 2 inches wide and attaches to back harness connector and extends down to the rear right belt box, next to the detonator.
- Rear right belt box has a small 1/2 inch high grey connector frame detail on top that strap feeds into.



Back Armor

For 501st approval:

- Armor is painted matte or satin white.
- Rear tank has detailed area that contains 4 circles. Under the circles at the left side of the back there are two parallel lines and the the right of the back there is a squared detail.
- Top of the tank has a thermal detonator with three buttons.
- in the recess under the back tank, there are two radio boxes.
- Chest and back plate match together at the sides with no gap, just a seam line.
- Shoulder straps are placed underneath the chest to connect to the back.

For level two certification (if applicable):

- Shoulder straps are slotted into the back armor, into the detail ridges of the top connection points.
- Highly detailed resin insert replaces softer details.



Abdomen Armor For 501st approval:

- Armor is painted matte or satin white.
- Four 1/4" diameter holes per side on indents of abdomen.
 - ◆ Eight holes total.
- Abdomen armor wraps around the wearers body and is sealed at the sides or at the back.
- Abdomen is completely contained under the chest and back armor.

For level two certification (if applicable):

- Abdomen armor is seamless at the sides and closed in the back.
 - ◆ A detail plate covers the seam line and hides all work.



Codpiece and Posterior Armor For 501st approval:

- Armor is painted matte or satin white.
- Cod and Posterior armor connect at the hips.

For level two certification (if applicable):

- Hips are connected via a snap with the correct detailed shape of the armor at the connection point.



Belt For 501st approval:

- Armor is painted matte or satin white.
- Ammo Belt with boxes and detonator.
- Detonator is centered on the back of belt.
- 8 boxes total, 4 on each side of abdomen and attached to the belt.

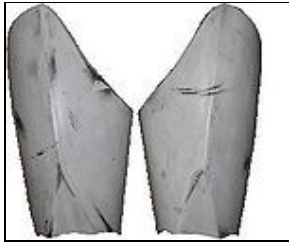
For level two certification (if applicable):

- Belt Boxes are notched and fitted flush with the details of the belt.
- Left Rear belt box has two square buttons in the top left corner and equal symbol detail at the bottom right.
- Right Rear belt box has a bar with two small cylinders centered with and equal symbol detail on the bottom left.
- From the rear two belt boxes the belt has a ribbed detailed appearance.



Kama For 501st approval:

- Kama is maroon, matching the color of the spaulder and rank stripe on the the chest plate.
- The rear of the Kama has a triangle split.
- Kama starts at the front belt boxes.
- Kama is made from a heavy material like denim or duck cloth.
 - ◆ Leather or vinyl is not correct.
- Kama flows to the bottom of the knee armor.
- Approximately 6 inches below the front belt boxes, a thin, white, 1/2 inch strap with metal clip is attached to clip onto the command buckle that is attached to the belt.



Thigh Armor

For 501st approval:

- Armor is painted matte or satin white.
- Front of thigh armor has a flat triangular area near the knee. From the top of the triangle a ridge line travels up the front of the thigh to the top.
- Rear of the thigh has an indentation.
- Armor is seamless.
 - ◆ No visible traces of how the armor was assembled are shown.

For level two certification (if applicable):

- Outside of lower portion of the thighs comes to a point and inner lower end is rounded.



Knee Armor

For 501st approval:

- Armor is painted matte or satin white.
- Knees wrap around the front of the leg.
- From top center a raised detail line is present.
- Knees are strapped to the leg via a white strap with a raised center area that wraps around the leg and connects on both sides of the Knee.

For level two certification (if applicable):

- Center strap is colored primer gray.
- Connection between the knee and the strapping has a detail clip.



Lower Leg Armor

For 501st approval:

- Armor is painted matte or satin white.
- Lower Legs are mirror images of each other.
- The front of the armor pieces have a triangular detail at the top of the leg and a hard ridge line down the front of the shin.
- Back of the lower legs have an indentation, just under the calf, that follows down to the ankle.
- Calf can have an access area on the inside of the leg.
 - ◆ The outside of the calf is closed.

For level two certification (if applicable):

- Calves are seamless and have a trap door access through the indent in the rear of the lower leg.



Boots

For 501st approval:

- White, ankle high or tall enough to cover the ankle and eliminate any black undersuit visible at the ankle area.
- Boots are lace-less and have flat soles.
- The boots have armor detail to include a natural seam at the toe and a strap that goes over the top of the foot with two protruding disks at each side of the strap.
- There are no markings or labels from the shoe makers.
- Boot soles are primer gray.

Optional Accessories

Items below are optional costume accessories. These items are not required for approval, but if present appear as described below.



DC-15S Blaster
For 501st approval:

Manufactured by BlasTech Industries the DC-15S is smaller in scale than the DC-15A blaster rifle. Although it has a shorter range than that of the "A" model, it is easier to handle with a higher rate of fire. It features a folding stock for braced firing.

- Realistic Clone Style DC-15S Blaster.
- Blaster may be scratch built out of plastic, wood, metal or cast in resin.
- Blaster has realistic Episode II or Episode III details:
 - ◆ Wire frame sight.
 - ◆ Folding stock.
 - ◆ (12) radiator fins evenly spaced along the length of barrel.
 - ◆ Igniter detail knobs.
 - ◆ Charge magazine clip on right side.
- Total length is approximately 26" (66 cm).
- Because of the scale, the Hasbro version is incorrect.

For level two certification (if applicable):

- Charge magazine detail on clip is metal to gun metal grey in color.
- Detail bolts and screws are metal to gun metal grey in color.
- Igniter knobs have some copper coloring.
- Blaster is weathered.

For level three certification (if applicable):

- Functioning Blue LED is installed in barrel.



DC-15A Blaster Rifle
For 501st approval:

Manufactured by BlasTech Industries, the DC-15A is a tibanna gas, cartridge powered weapon. Hyper-ionized blue plasma bolts are more than capable of penetrating armored units. Exceptionally effective against both droids and contemporary targets.

- Realistic Clone Style DC-15A Blaster Rifle.
- Blaster rifle is scratch built out of plastic, wood, metal or cast in resin.
- Blaster has realistic Episode II or Episode III details:
 - ◆ Flip up sight in down position.
 - ◆ (10) radiator fins evenly spaced along the length of barrel.
 - ◆ Power setting adjuster detail lever.
 - ◆ Sniper Scope attached under rifle in storage position.
 - ◆ Charge magazine clip on left side.
 - ◆ Igniter detail knobs.
- Total length is approximately 55 inches (139.7 cm).
- Because of the scale, the Hasbro version is not allowed.

For level two certification (if applicable):

- Charge magazine detail on clip is metal to gun metal grey in color.
- Detail bolts and screws are metal to gun metal grey in color.
- Igniter has some copper coloring.
- Power setting adjuster detail lever is metal or gun metal grey.
- Sniper scope is metal or gun metal grey.
- Blaster is weathered.

For level three certification (if applicable):

- Functioning Blue LED is installed in barrel.

This document and all of the images within were created by and are the property of the 501st Legion. All other uses are prohibited.

- [This CRL is available as a PDF](http://www.501st.com/databank/Costuming:CC_-_Commander_Bacara) at www.501st.com/databank/Costuming:CC_-_Commander_Bacara

The 501st Legion is a worldwide Star Wars costuming organization comprised of and operated by Star Wars fans. While it is not sponsored by Lucasfilm Ltd., it is Lucasfilm's preferred Imperial costuming group. Star Wars, its characters, costumes, and all associated items are the intellectual property of Lucasfilm. ©2012 Lucasfilm Ltd. & TM. All rights reserved. Used under authorization.

Visit www.501st.com to learn more.